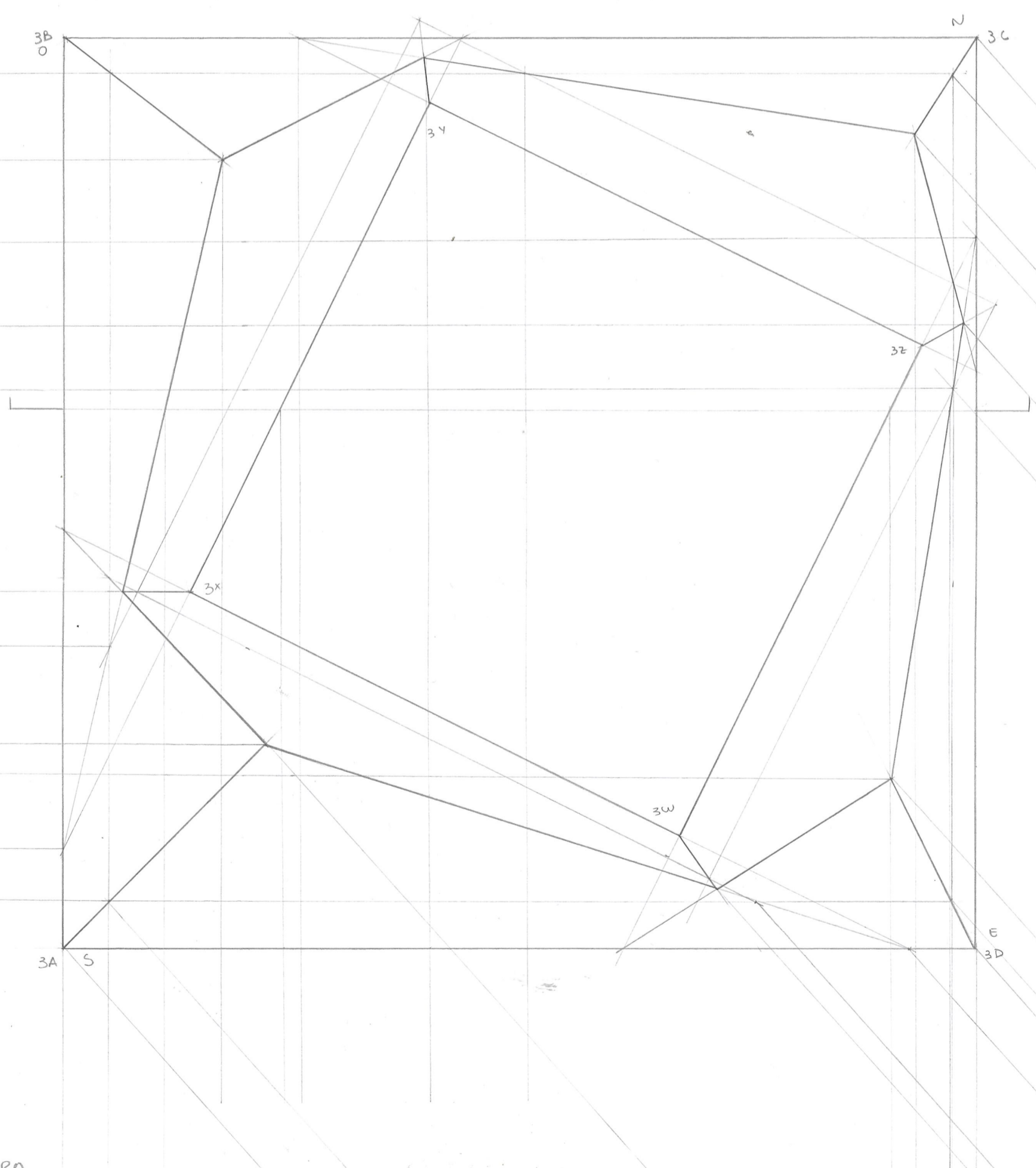
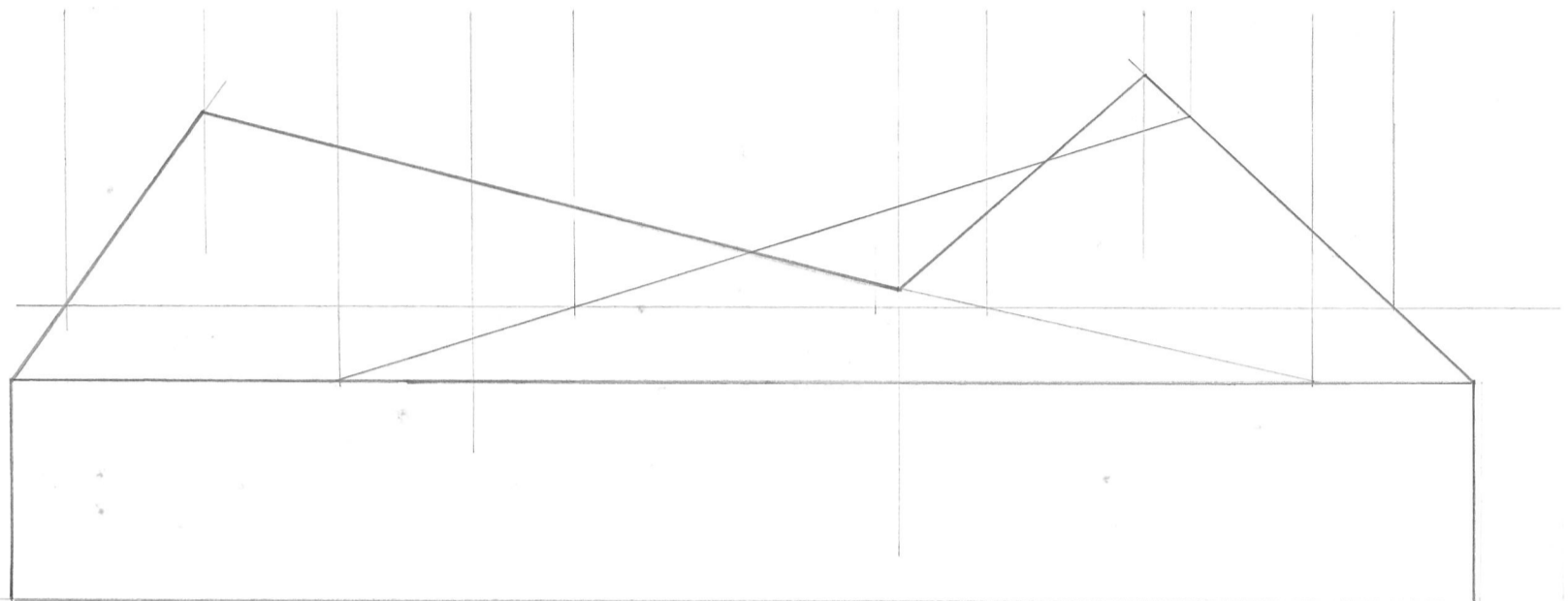
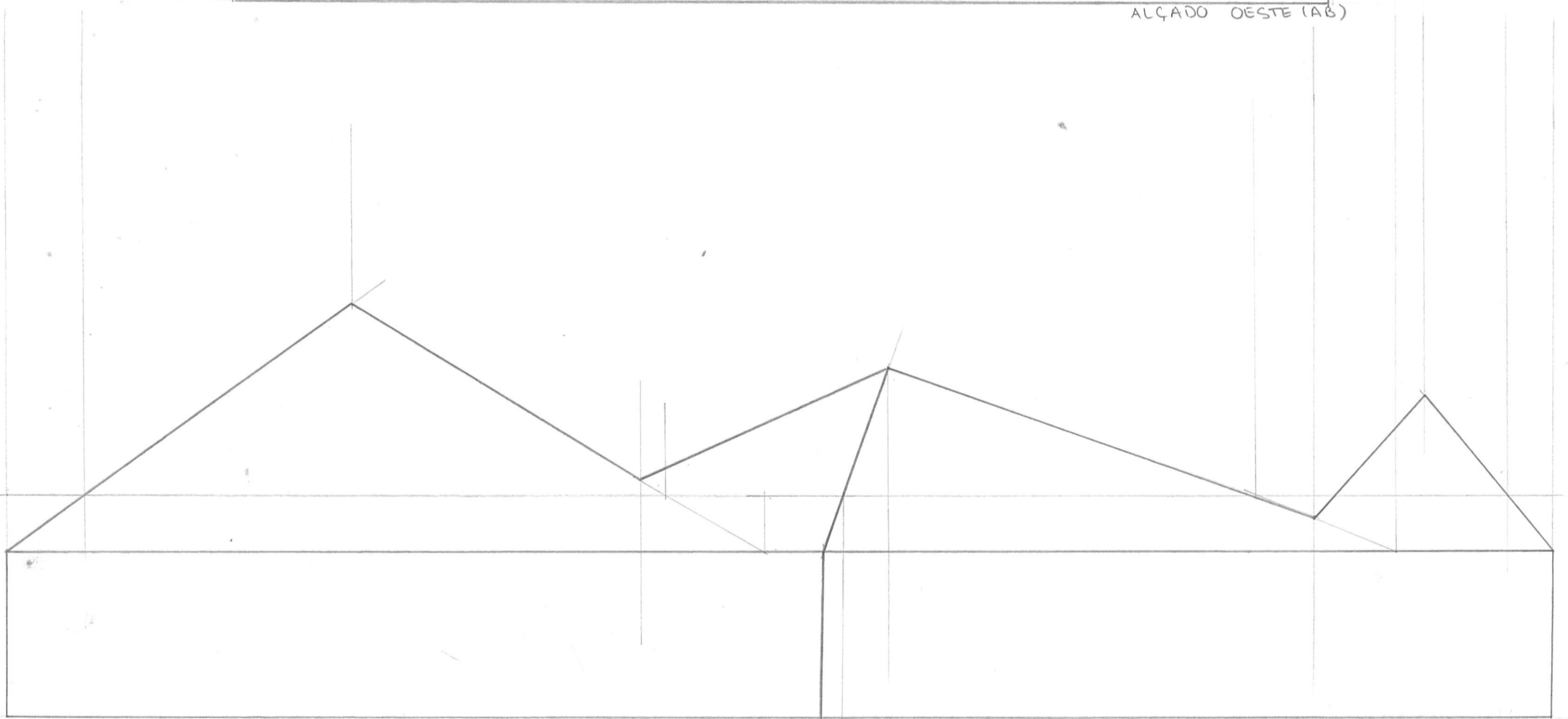


$AB = 100\% = 1\text{cm}$   
 $BC = 115\% = 0.75\text{cm}$   
 $CD = 200\% = 0.5\text{cm}$   
 $DA = 1\text{cm}$   
 $WX = 2 = 0.5\text{cm}$   
 $XY = 45^\circ = 1$   
 $YZ = 0.75 = 0.5\text{cm}$   
 $ZW = 1\text{cm}$

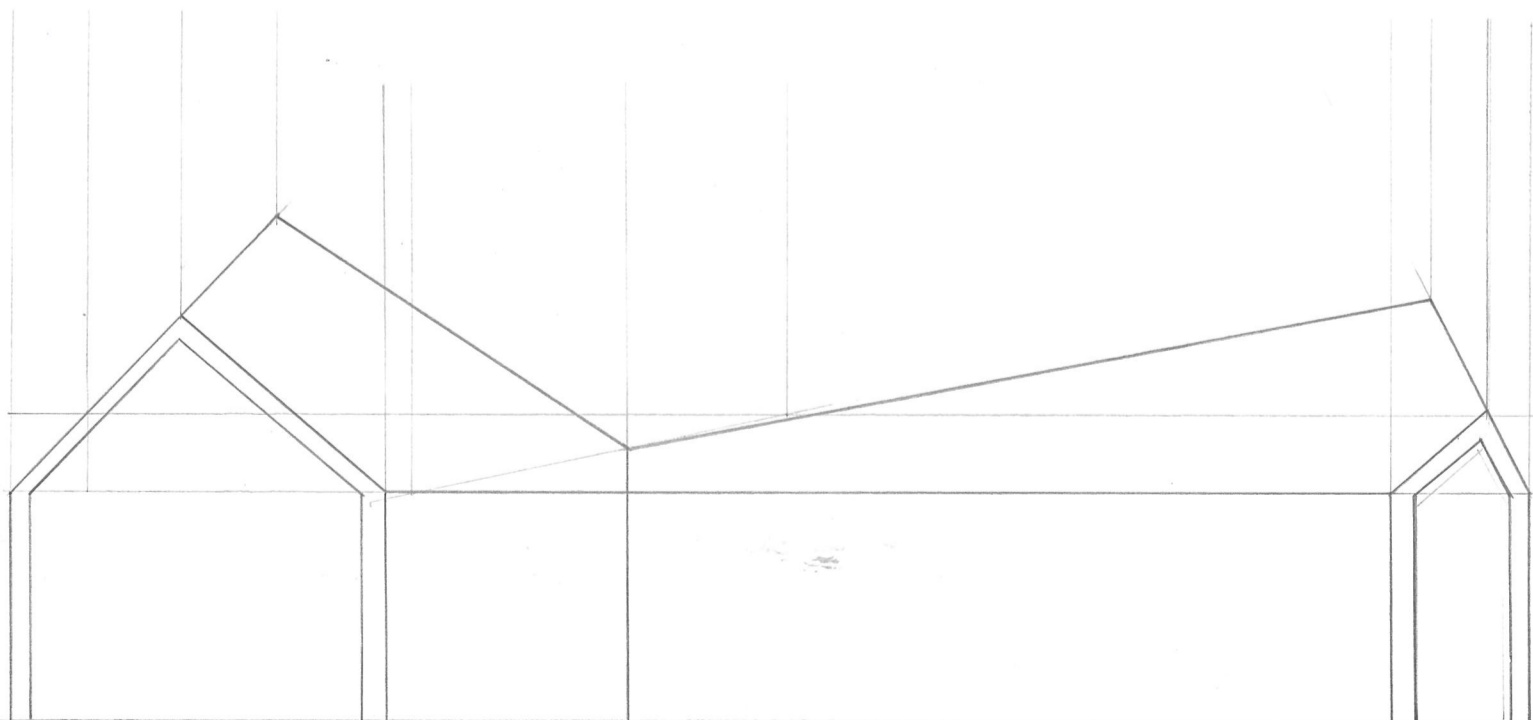




ALÇADO OESTE (AB)



ALÇADO OBLÍQUO



CORTE VERTICAL